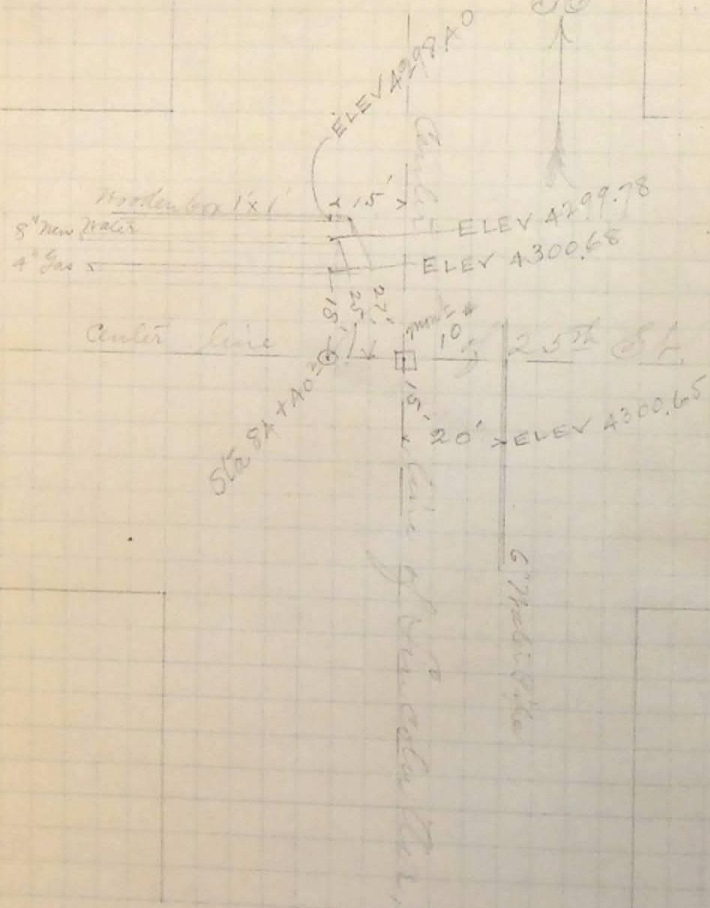


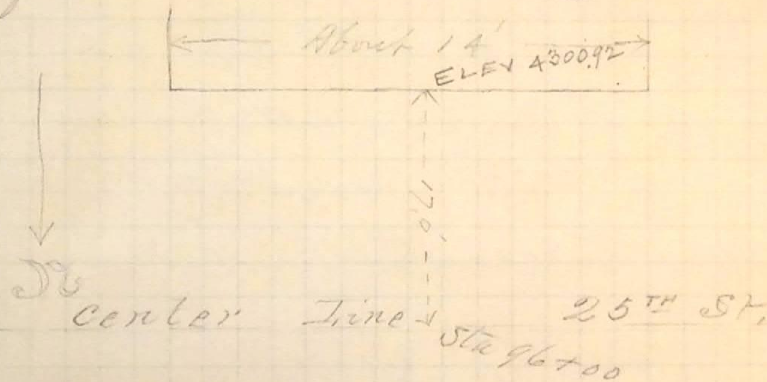
Location and Elev. of Curb at Intersection
of Lincoln Ave and 25th St.



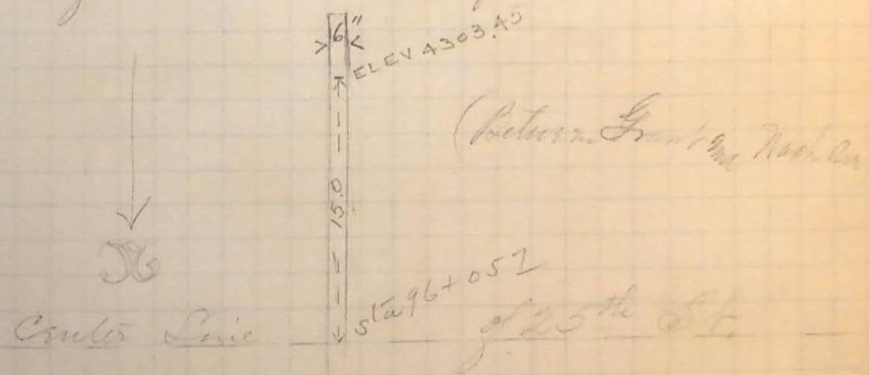
July 26th 1891

5

Location and Elev. of Old Platform 15ft. South of
Center of 25th St bet Grant and Washington



Location and Elev. of Old Water Main 6" diam 15ft
of center of 25th St and running N to across 25th St



Mar 9th 1891